



SONAR ONDERZOEK OOSTERSCHELDEKERING

SLUITGAT:	Roompot Oost
PROJECTCODE:	2101v2401
OPNAME:	4+6+9-9-2024
RAPPORTAGE:	9-10-2024
VERSIENUMMER:	1

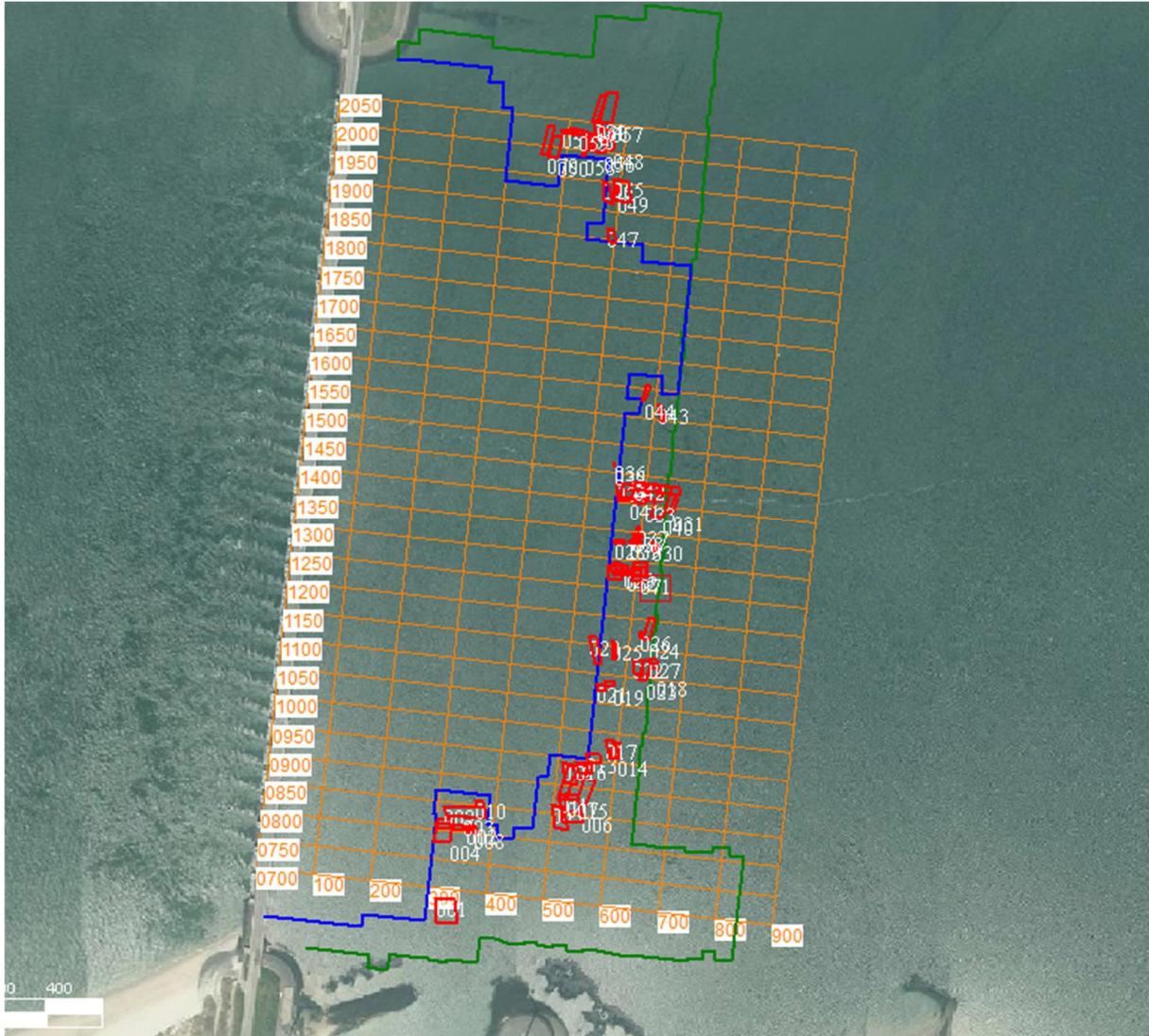
Categorie indeling:
Cat 1. Blokkenmat goed zichtbaar.
Cat 2. Blokkenmat zichtbaar.
Cat 3. Blokkenmat slecht zichtbaar.
Cat 4. Blokkenmat twijfelachtig zichtbaar.
Cat 5. Blokkenmat is mogelijk verstoring.



Ministerie van Infrastructuur en Waterstaat

Rijkswaterstaat CIV
Inwinning & Gegevensanalyse

Mobiel Meten Team Zee en Delta

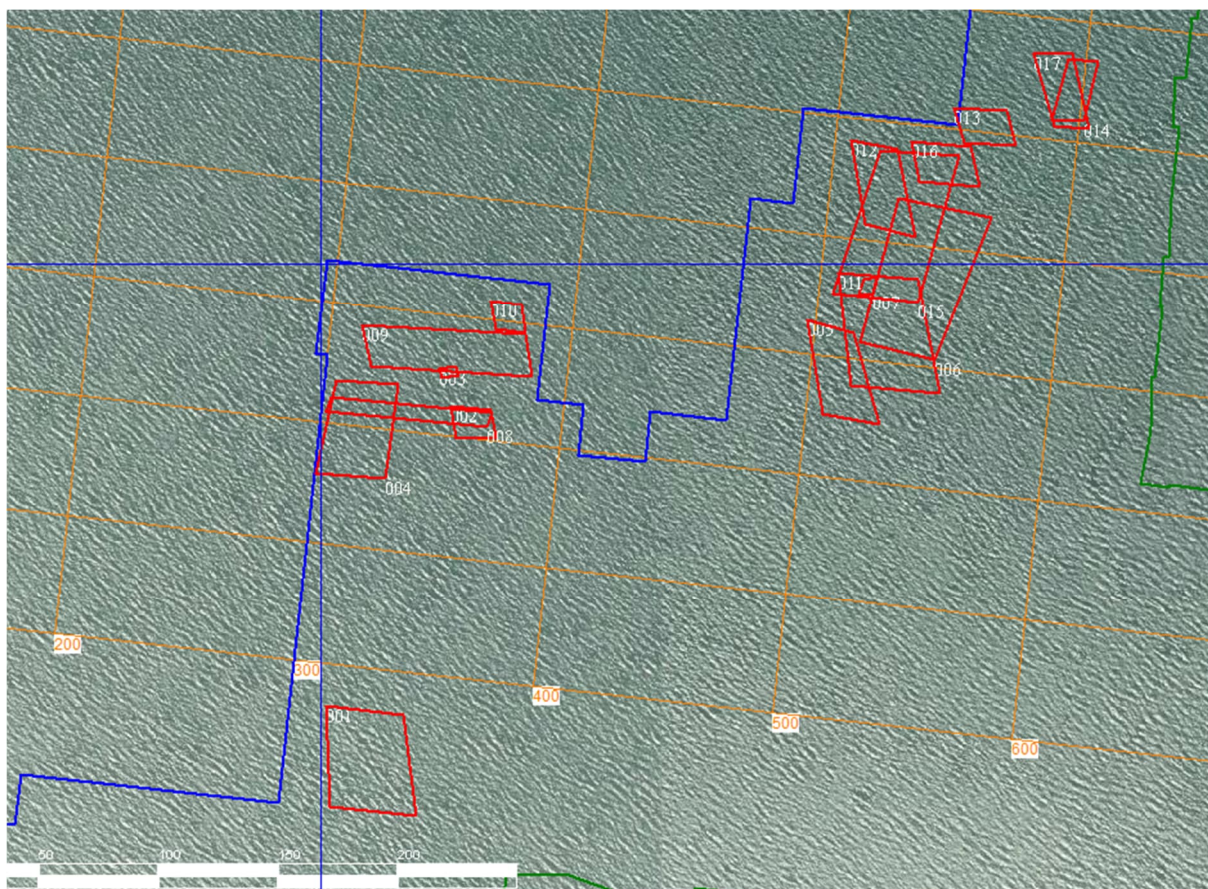


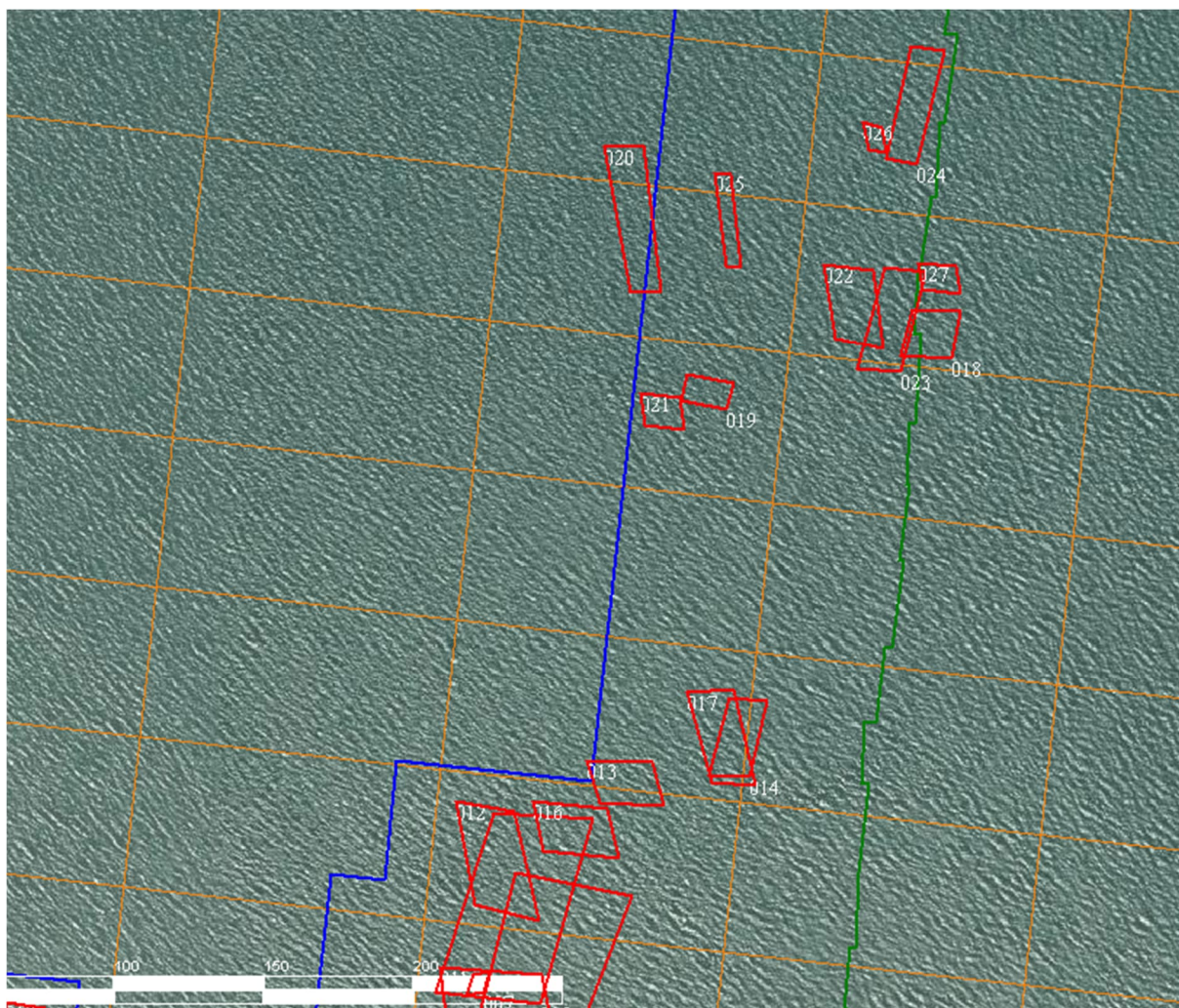


Ministerie van Infrastructuur en
Waterstaat

Rijkswaterstaat CIV
Inwinning & Gegevensanalyse

Mobiel Meten Team Zee en Delta



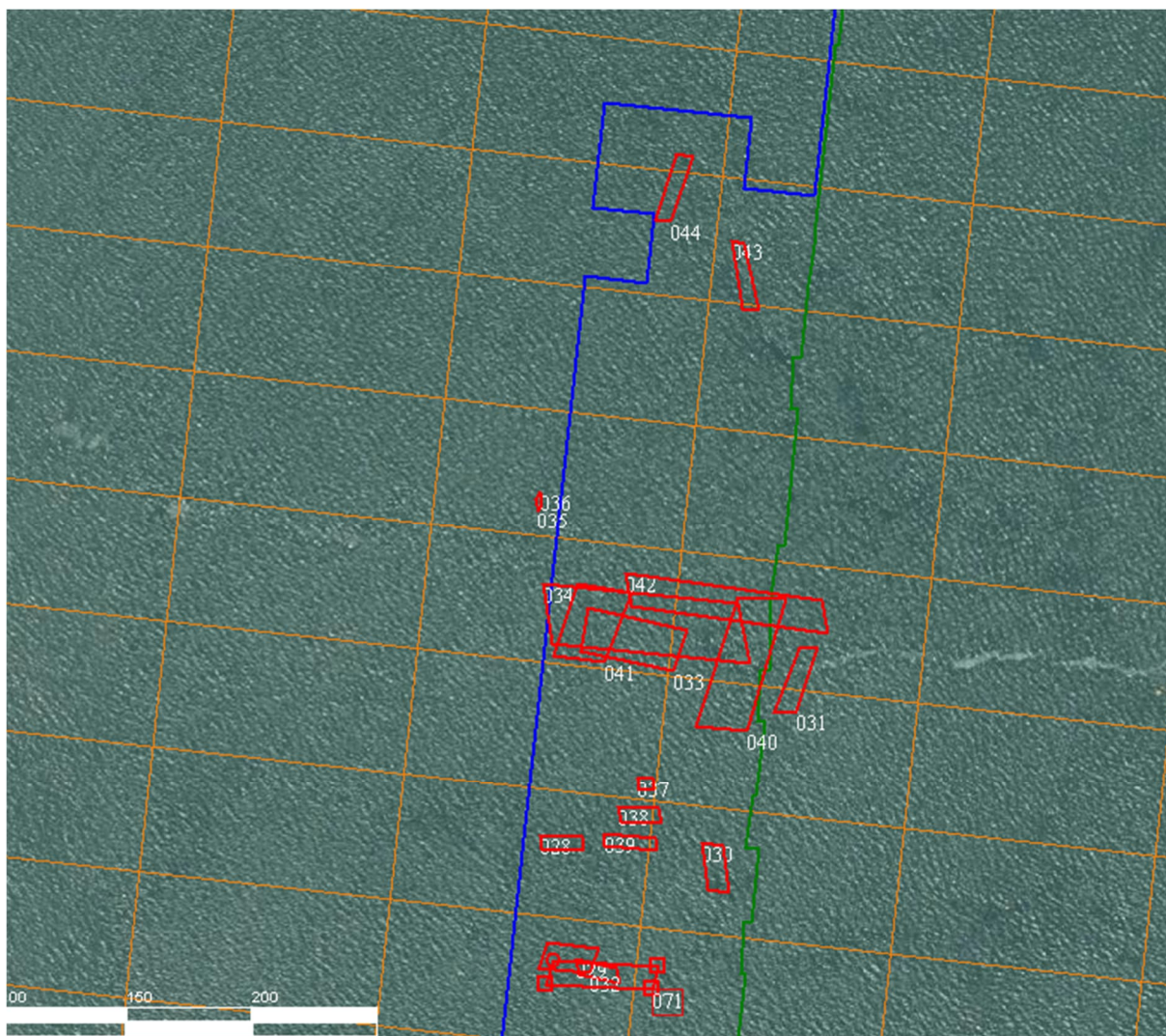


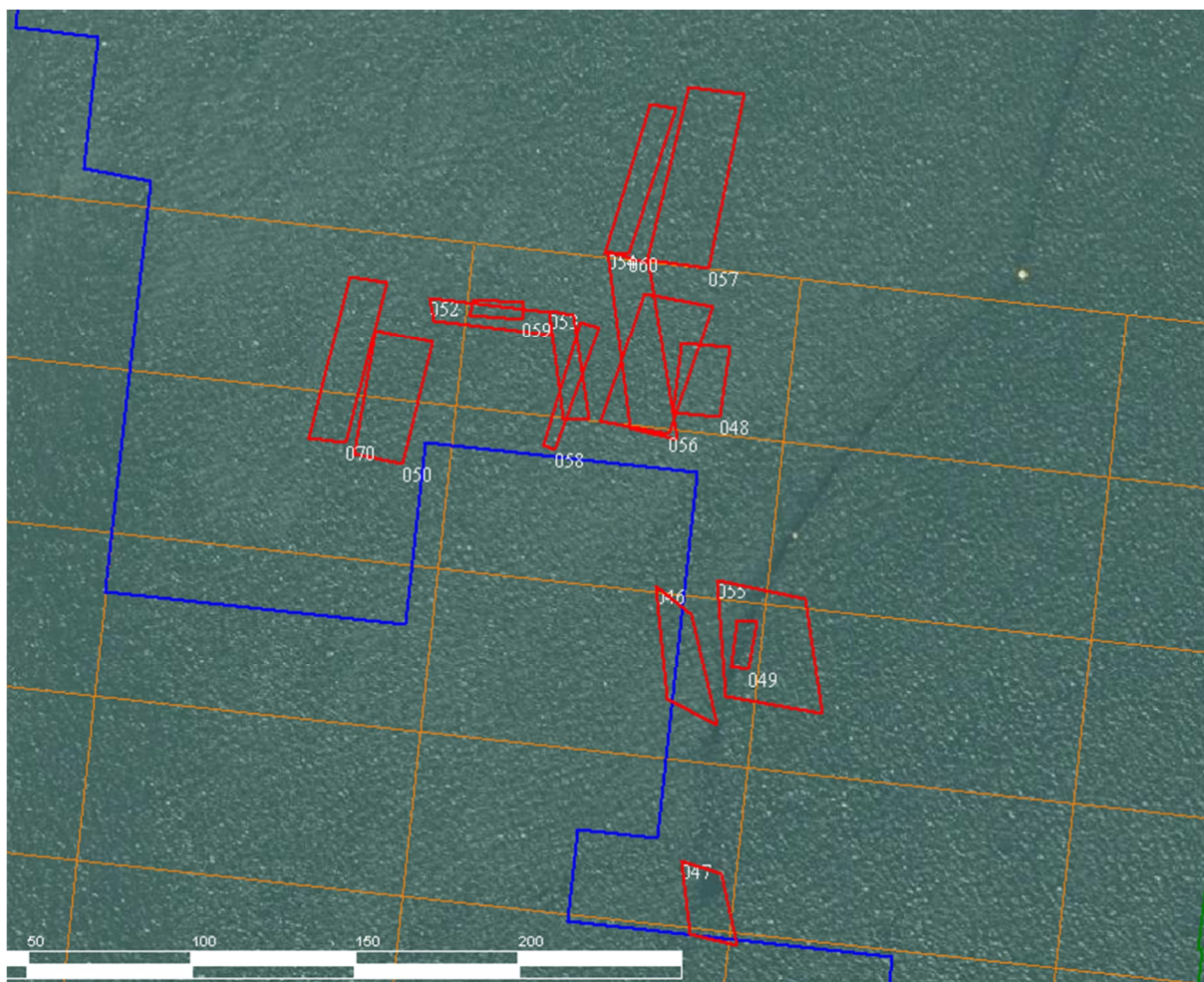


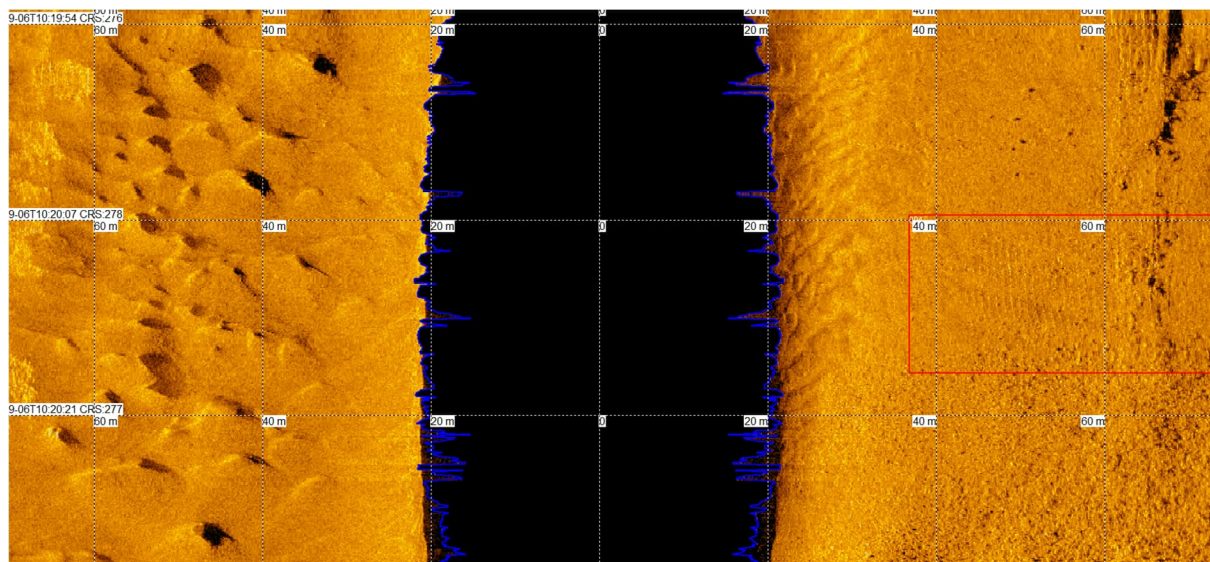
Ministerie van Infrastructuur en Waterstaat

Rijkswaterstaat CIV
Inwinning & Gegevensanalyse

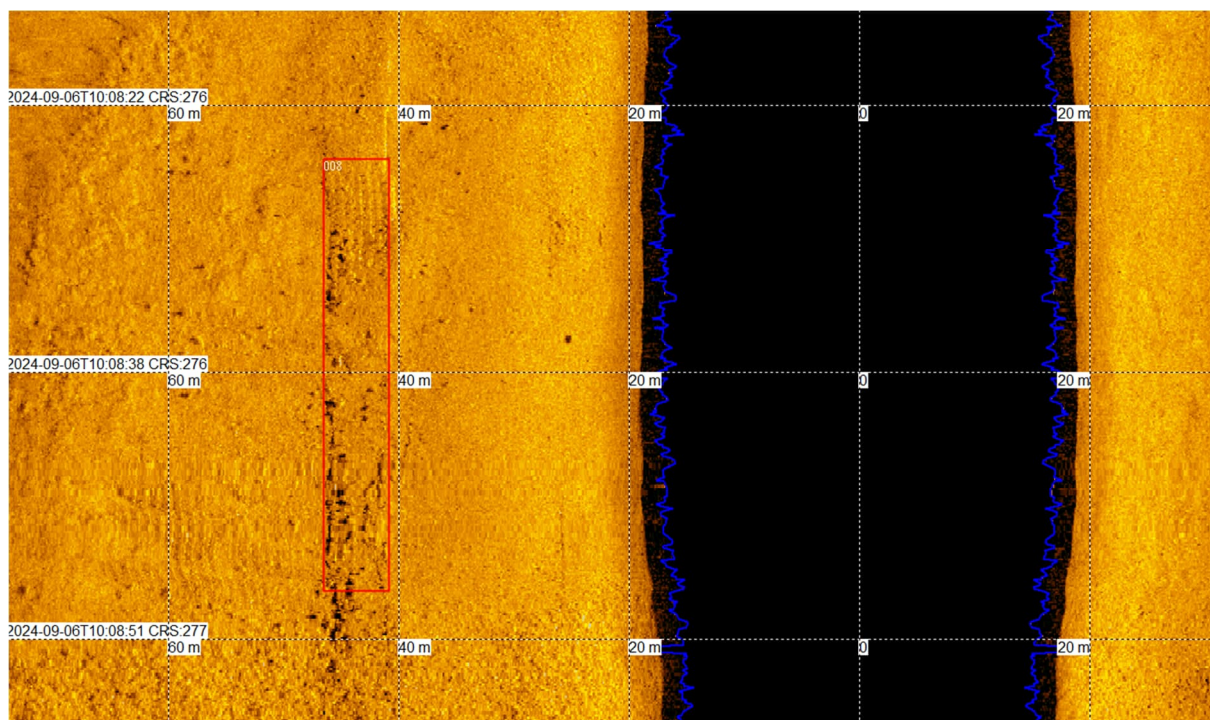
Mobiel Meten Team Zee en Delta



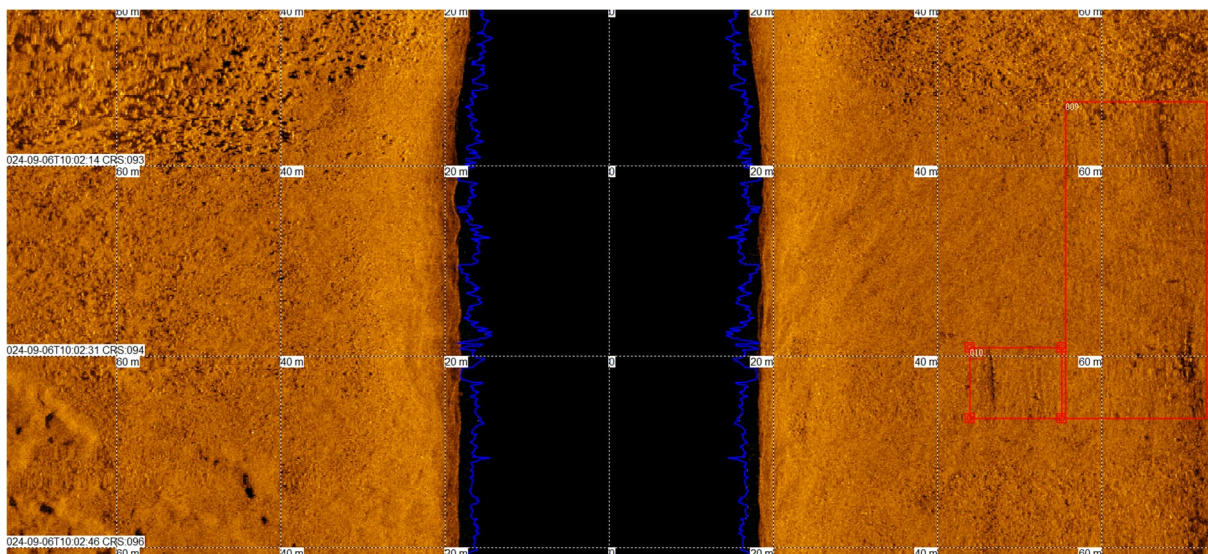




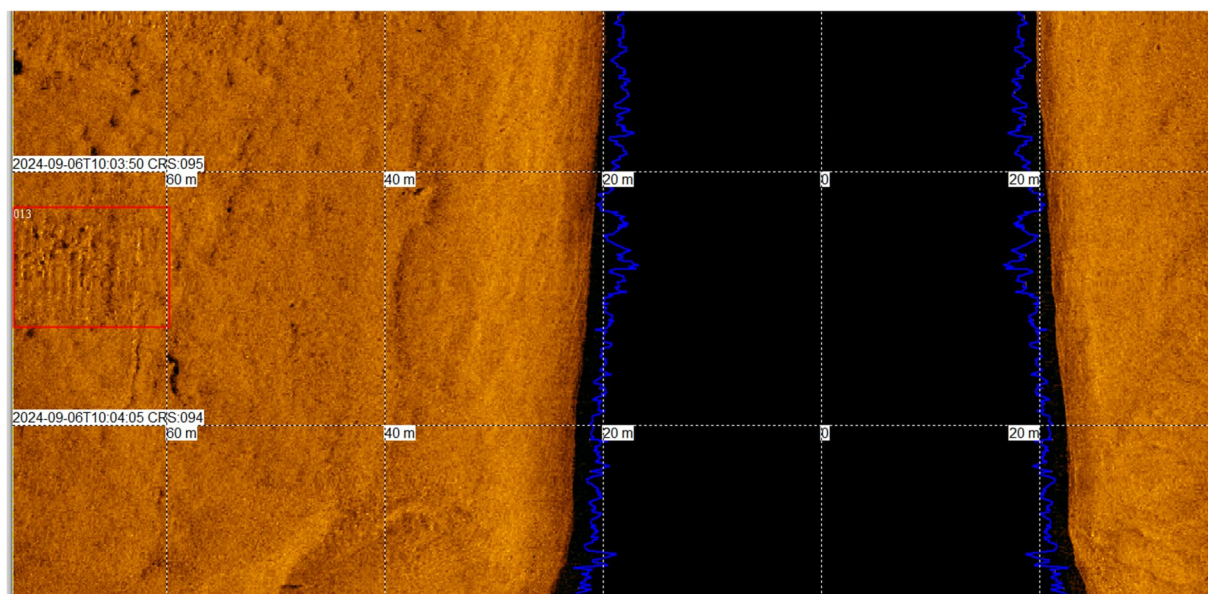
Raai 750 koers West, cat 2 zichtbaar.



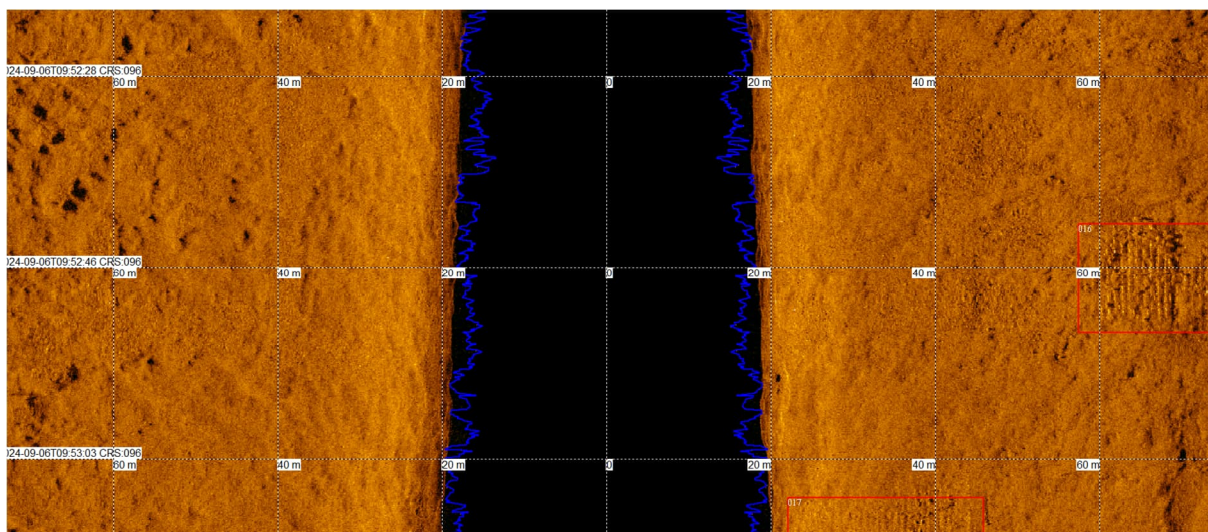
Raai 850 koers West, cat 3 slecht zichtbaar.



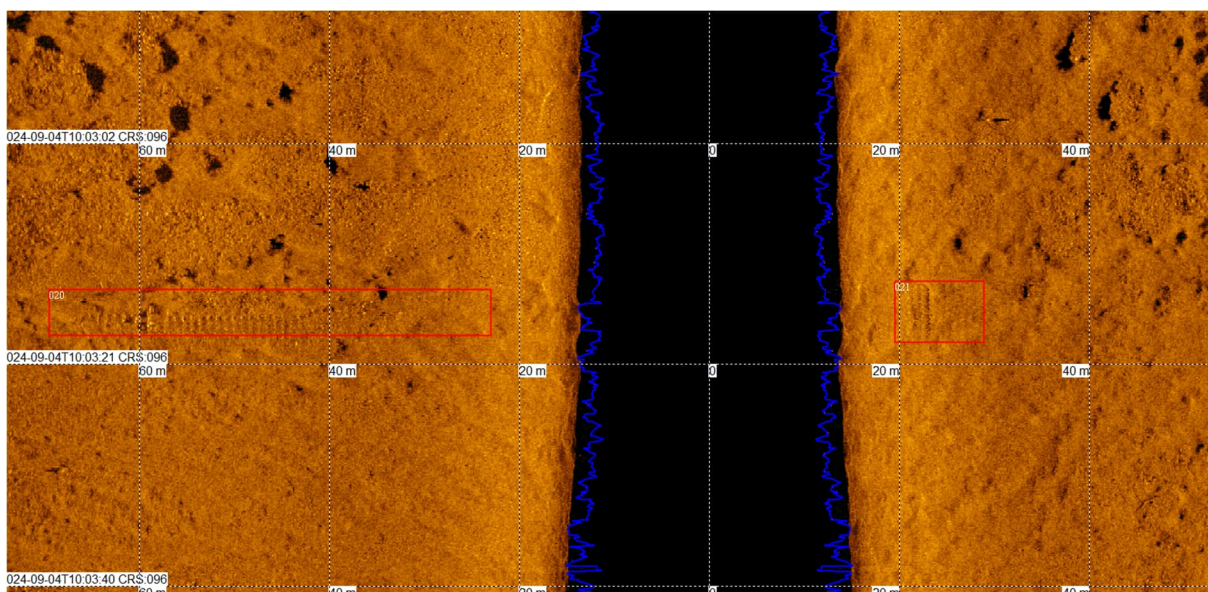
Raai 900 koers Oost, cat 3 slecht zichtbaar.



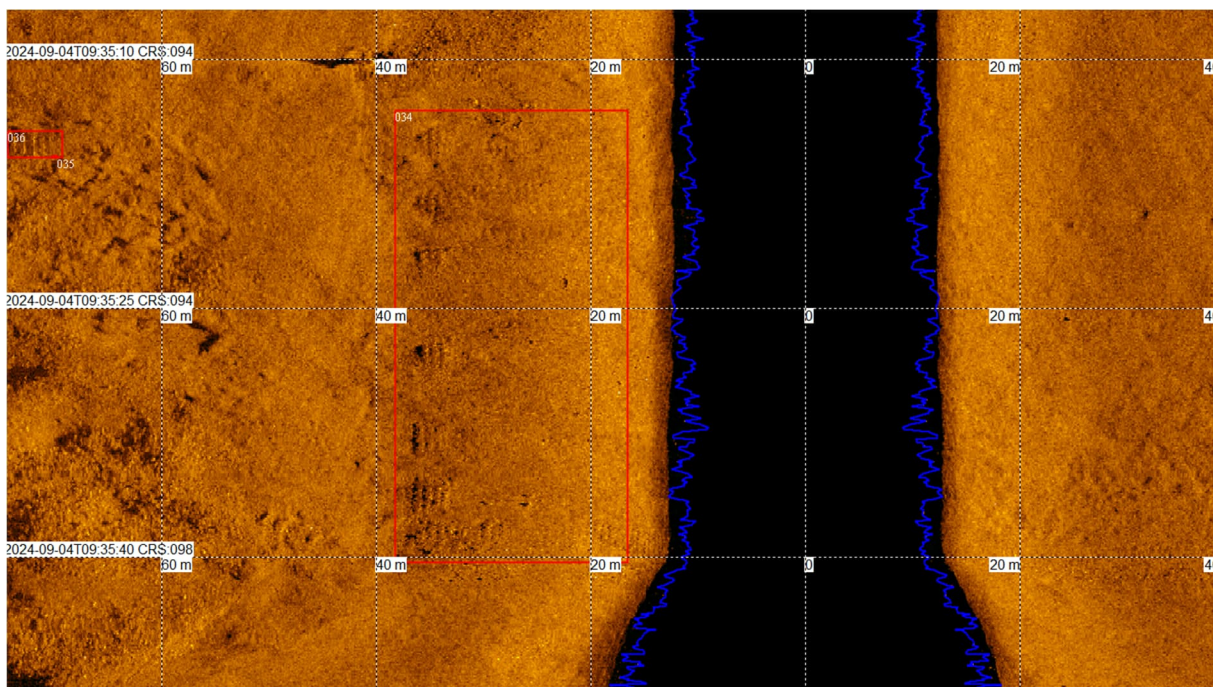
Raai 900 koers Oost, cat 2 zichtbaar.



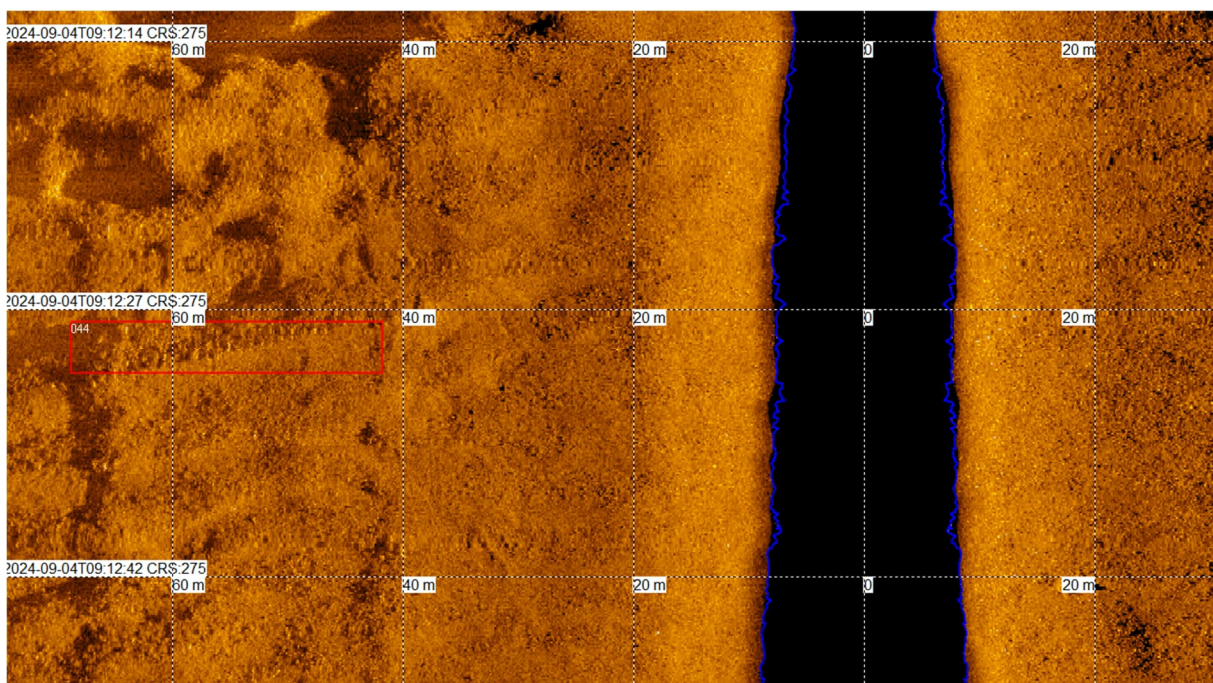
Raai 1000 koers Oost, cat 1 goed zichtbaar.



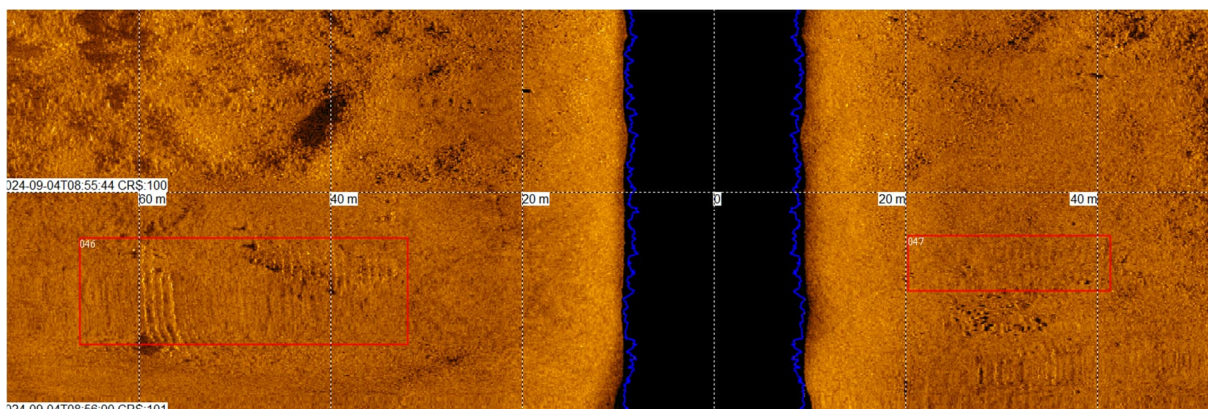
Raai 1100 koers Oost, cat 2 zichtbaar.



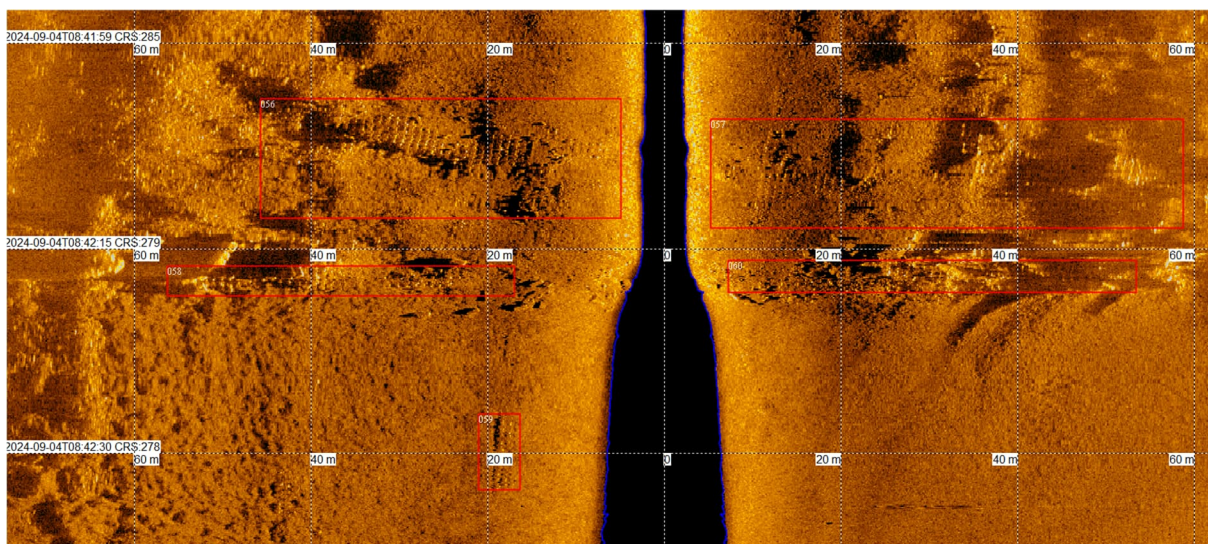
Raai 1400 koers Oost, cat 1 goed zichtbaar.



Raai 1650 koers West, cat 3 slecht zichtbaar.



Raai 1900 koers Oost, cat 2 zichtbaar.



Raai 2050 koers West, cat 1 goed zichtbaar.